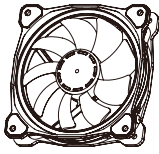


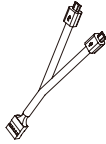
Parts List



A x 5
Fan



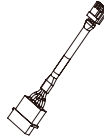
B x 1
Controller



C x 1
Controller Cable



D x 1
Bridge Cable



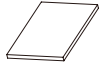
E x 1
Power Cable



F x 20
Short Screw

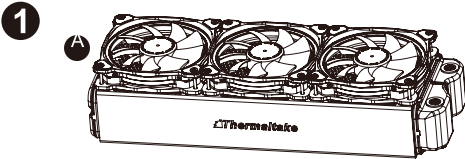


G x 20
Long Screw

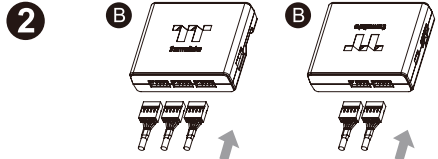


H x 1
Velcro

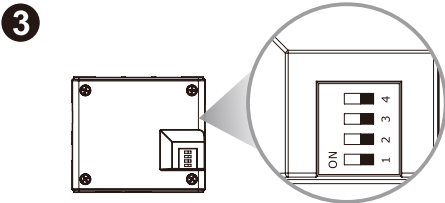
Installation Guide



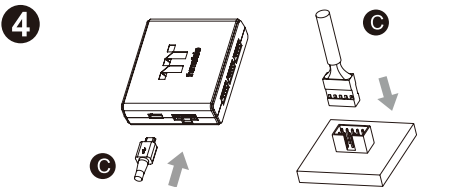
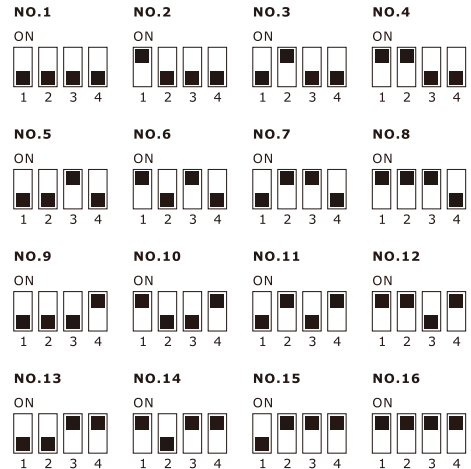
Install the fans properly onto the radiator.



Connect the fan cable onto the controller.

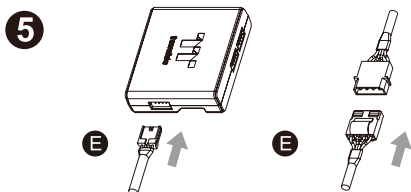


Set the DIP switch on the back side of the controller to assign the number of the controller

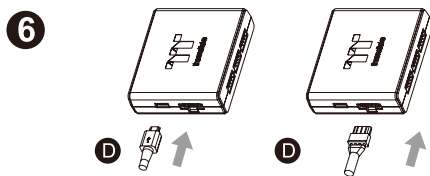


Connect the controller cable onto the mainboard (USB 2.0 9 pin) and controller.

Installation Guide



Connect the power cable to the 4pin Molex connector and controller.



If you want to connect two or more connectors, you can use the bridge cable to connect the controllers.

Riing Plus RGB Software control interface

Please download software from **Thermaltake Official website**.

search "**Riing Plus RGB**" on the official website.

OS compatibility: Windows 7 / 8 / 8.1 / 10

1. Software User Interface



A. Riing Plus RGB software Profile Setting

A-1 Set up a profile: Choose a Profile and set up the Fan Speed Mode and LED Lighting Mode, then click the SAVE icon(A-3) to store your settings to the software.

A-2 Save a profile to controller: Select a profile and a controller, then click the Save icon to assign the profile to the controller.

B. Follow the Installation Guide step 3, you can set up the number of the controller

C. Fan Speed Mode and LED Lighting Mode

Full Lighted / Wave / Pulse / Ripple / Microphone / Sound effect / RGB Spectrum / Flow

C-1 Performance Mode: 500~1500RPM (Duty cycle 0%~100%)

Silent Mode: 500~900RPM (Duty cycle 0%~50%)

PWM Mode: The PWM function can be turned off and set the fan speed manually

C-2 LED Selection: set up the LEDs lighting, color, and speed.

Light Mode: Choose a lighting mode

Color Mode: Choose the LEDs color

Light Speed: Set up the speed of the LEDs light

LED Spot & Color Palette: Choose the color of each of the individual LEDs by clicking the color palette

Done: Save your setting

Default: Reset the LED setting back to the default

Brightness: Drag the mouse to adjust LED light brightness.

LED On/Off: Click the LED Light icon to turn on or off the LED light

RGB Color Code: Enter the Decimal code of Red, Green, and Blue to set the LEDs color

C-3 Fan On/Off: User can switch off the fan speed and led control function in the software if the fan is not plug into the controller.

D-1 & D-2. Fan Selection: click the control panel to rotate it to the front

2. Mobile APP Connection Password

To connect the Riing Plus RGB APP, please connect the PC to your wireless first, and click the Password setting under the software setting menu, set up your connection password. The Riing Plus RGB APP will ask for your password every time when starting the APP.

For more information please visit www.thermaltake.com

